

# Apex2

## Personal Air Sampling Pump

- Class beating performance
- Bluetooth® connectivity and Airwave software
- High wearer acceptance
- Motion sensing
- Simple operation
- Ingress protection (IP65) for use in harsh environments
- Intrinsically safe for use in flammable atmospheres
- Data logging models available
- ISO13137 compliant



### Overview:

The Apex2 range of sampling pumps has class beating performance and all models are Intrinsically Safe for use in flammable atmospheres. Get connected with the Airwave® mobile software and easily send data directly to your laptop.

### Application:

- Asbestos
- Occupational Hygiene
- Mining
- Indoor air quality
- Construction sites



Scan  
For More  
Information

**Brisbane Office:**  
1/3 Deakin Street  
Brendale QLD 4500  
Ph: 07 3481 9000

**Perth Office:**  
5/30 Enterprise Crescent  
Malaga WA 6090  
Ph: 08 6184 7840

**Representatives/Offices In**  
Sydney Melbourne  
Hobart Adelaide  
Auckland Wellington

[sales@controlequipment.com.au](mailto:sales@controlequipment.com.au)

[www.controlequipment.com.au](http://www.controlequipment.com.au)

## Simple Operation

The Apex2 has a simple user interface and menu structure. Using only 4 buttons you can easily navigate through the colour coded set-up menus.

- Single key press to start a run
- Displays flow as well as battery life in remaining hours
- Colour coded display e.g. green when pump is running



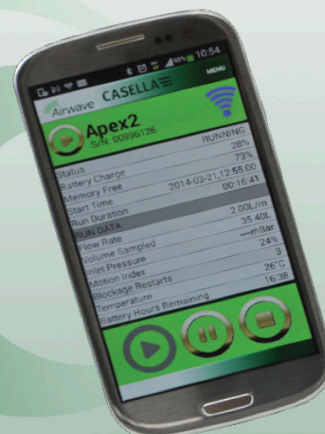
Colour coded display showing remaining



Easy to use menu



Use Airwave software on a mobile device to remotely monitor multiple pumps, without disturbing the wearer.



Start, stop and monitor the pump remotely via an iOS or Android device.

(Airwave is available free in the Apple App Store and Google Play Store)

## Class Beating Performance

Whatever media you're using, you can be assured that the Apex2 has the power to handle any personal monitoring regime. Optimised at around 2l/min, the flow at which most occupational hygiene measurements are made, the Apex2 has outstanding back pressure capability.

- Pressure and temperature compensation
- Exceptional pulsation control
- High back pressure
- Long battery life

These features all ensure that you can be confident in getting good, accurate samples with various filters.

## Easy To Wear

With its slim, light weight and ergonomic design, the pump is unobtrusive to the wearer being monitored. A sturdy clip with a lifetime guarantee means it's secure and the detachable rubber boot guards against knocks.

- Smooth finish means it's easy to decontaminate
- Lockable keypad to prevent tampering
- Motion detection to show the pump has been worn



**A protective rubber boot is included**

## Get Connected

Monitor your pump remotely with Bluetooth® and the supporting Airwave software on your phone or tablet.

- Monitor the pump without disturbing the wearer
- Monitor multiple pumps
- Start and stop pumps remotely
- Email data direct to your PC

## Intrinsically Safe

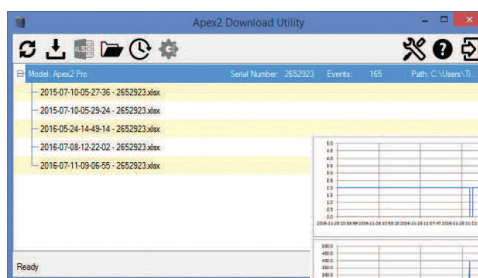
All models of the Apex2 are Intrinsically Safe (IECEx). The Apex2 has been designed specifically to be used in potentially explosive areas in the oil and gas, petrochemical and pharmaceutical industries as well as being suitable for use in the mining industry.

Ex ia I Ma  
Ex ia IIC T4 Ga  
Ex ia IIIC T1350C Da  
(Ta = -200C to +450C)

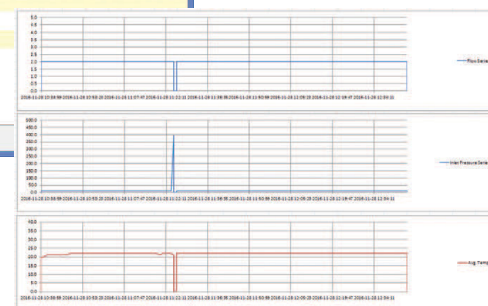
## Data And Reporting

The Apex2 can store up to 200 separate runs, storing data including start time and date, duration, volume sampled and motion index.

- Simple to use download utility for PCs
- Graphs flow, motion and back pressure
- Shows events such as blockages
- Downloads into Excel to easily view and share data



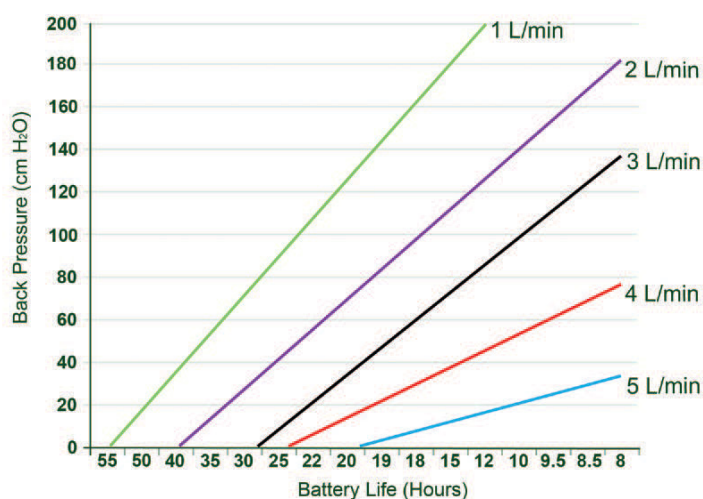
**Free download utility available at -**



**Starter Kit available to include sampling accessories**



Technical Specifications		Model Selection			
Flow Performance		Apex2 Models	Apex2	Apex2 Plus	Apex2 Pro
Flow Range ml/min	1000-5000	Intrinsically Safe	•	•	•
Low Flow Range ml/min	5-500 (requires an adapter)	Motion Sensor	•	•	•
Flow Control	< ± 5% at calibrated point	Logging of Flow and Motion			•
Pulsation	<10% @ 2l/min	Bluetooth		•	•
Back Pressure Capability	see separate table	PC Download		•	•
Fault Detector	Auto Restart	Inlet pressure sensing		•	•
Operating		Run duration timer		•	•
Display	Colour OLED	Fully programmable timers			•
Controls	4 buttons	All pumps include 1m tube, Field Guide, Certificate of Conformity and protective rubber boot.			
Status Indicators	Red/Green LED				
Dimmensions	112x37x102mm				
Weight including boot	490g				
Environmental		Ordering Information			
Temperature	Operation, 0 - 45°C Storage, -10 - 50°C	Apex2IS	Apex2 I.S. Standard Pump		
Humidity	30-95% RH (non-condensing)	Apex2Plus	Apex2 I.S. Plus Pump		
Barometric Pressure	Auto-correcting	Apex2Pro	Apex2 I.S. Pro Pump		
Electrical		Apex2 Accessories			
Battery Type	Li ion with level indicator	209152B/KIT	Single Docking Station for Apex2 inc PSU & USB Cable		
Battery Level Indicator	Yes	209156C/KIT	5-Way Docking Station for Apex2 inc PSU & USB Cable		
Battery Life	See separate table	209025C	Protective Rubber Boot (included with pump)		
Chargers	Single or 5-way	Apex2 Kits			
Charge Time	Typically <6hrs	APEX2IS/KIT	5-Way Apex2 Standard Kit		
Approvals	IECEX & ANZEx EN1232 Compliant ISO 13137 Compliant Ingress Protections: IP65	APEX2ISPLUS/KIT	5-Way Apex2 Plus Kit		
		APEX2ISPRO/KIT	5-Way Apex2 Pro Kit		
		Additional to the 5 off Pumps, each kit includes, 1m tubing and male luer per pump, plus 1 field guide, Certificate of Conformity, 5-way docking station, PSU, USB cable and air sampling handbook.			



Back Pressure vs Battery Life

## Accessories:



Cyclone



5-Way Charging Kit